



Cat. No. MC1-20C2

## LED 1 Line Message Centers

*Up to 51 Characters*

### MC1 Series

#### FEATURES

- > Stores up to 81 messages
- > 100,000 Hr. multi-color LED lamp technology
- > Five message speed settings
- > 26 message operation modes
- > Built-in animations
- > 1 month typical memory retention
- > Built in real-time clock, 12 or 24 hour format
- > Built in serial computer interface- RS232 and RS485
- > Addressable
- > Password protected
- > Power cord with 3 prong plug
- > Continuous message entry with automatic centering in any mode

The Edwards MC1 Series of Message Centers are indoor rated multi-color LED communication centers. They may be used as a single stand-alone message center or can be networked into a plant wide communication system. When networked, one message can be transmitted from the controlling computer software to the serial computer interface on all the message centers within the facility or discrete messages can be sent to specific addresses within the communication network of messages centers.

The units may be wall or ceiling mounted using the supplied hardware. Designed for indoor communication in commercial and industrial environments, Edwards Message Centers can display production goals and performance, safety goals and performance, changes in employee benefits, company announcements and achievements as well as boost morale through employee recognition. May be used in commercial establishments from stores to restaurants to assist with internal and external communications.

#### Hand Held Remote Programmer

A 54 key hand held remote control keyboard with easy to understand programming instructions is supplied with each Edwards Message Center. MC-RP (supplied with each unit). Batteries included.

#### Accessories

Infrared message loader with 3 foot cable and 9V battery — MC-RIRL. Wall or ceiling mount bracket — MC4-CWMK

For Message Center Software & Hardware Accessories please see pages 7-18 to 7-25.

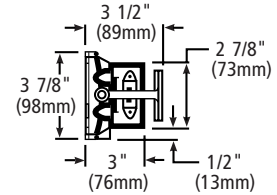
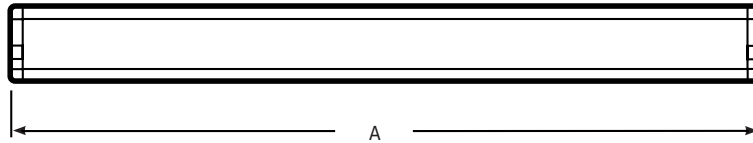
#### AGENCY APPROVALS

- > ETL Listed to ANSI/UL 1950 Second Edition (US)
- > Can/CSA-22.2 No. 950-M89 (Can)
- > FCC Part 15 Class A

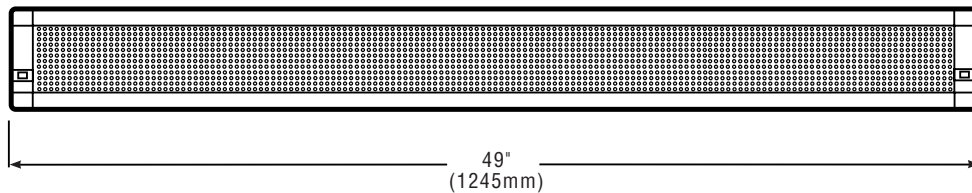
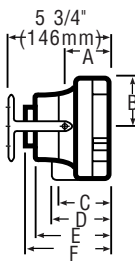
D-04

## TECHNICAL INFORMATION

Cat. No.	MC1-15C2	MC1-15R2	MC1-20C2	MC1-20C3	MC1-30C3
<b>Dimension A</b>	28 7/8" (733mm)	28 7/8" (733mm)	37 3/4" (959mm)	57 3/8" (1457mm)	84 3/8" (2143mm)



Cat. No.	A	B	C	D	E	F
<b>MC1-14C4</b>	2 1/4" (57mm)	3 1/8" (79mm)	2 5/8" (67mm)	3" (76mm)	3 7/8" (98mm)	4 3/8" (111mm)



Cat. No.	Power	No. characters	Character size Array	Pixel size diameter x center to center spacing	Pixel Color	Weight	Max. viewing distance w/ largest font*	Message capacity	Operating environment	Case dimensions/ display dimensions
MC1-15C2	120V AC ± 10% 40 watt max.	30 in condensed rotate mode, 15 in all other modes	2" Array 90 x 7 pixels	.2" x .3"	8 colors and 3 rainbow effects	6.25 lbs.	100 ft	81 different messages can be stored & displayed 6,000 characters	32-120°F 0-95% relative humidity non-condensing	28.9" L 2.1" D 4.5" H/ 2.1" H 27" L
MC1-15R2					Red					
MC1-20C2	120V AC ± 10% 40 watt max.	24 in condensed rotate mode, 20 in all other modes	2.1" Array 120 x 7 pixels	.2" x .3"	3 colors and 3 rainbow effects	4.7 lbs.	100 ft	81 different messages can be stored & displayed 28,000 characters	32-120°F 0-95% relative humidity non-condensing	37.7" L 2.9" D 3.8" H/ 2.1" H 36" L
MC1-20C3	120V AC ± 10% 40 watt max.	34 in condensed rotate mode, 20 in all other modes	3.1" Array 120 x 7 pixels	.276" x .45"	8 colors and 3 rainbow effects	12.5 lbs.	150 ft	81 different messages can be stored & displayed 29,500 characters	32-120°F 0-95% relative humidity non-condensing	57.4" L 3.8" D 5.5" H/ 3.1" H 54" L
MC1-30C3	120V AC ± 10% 50 watt max.	51 in condensed rotate mode, 30 in all other modes	3.1" Array 180 x 7 pixels	.276" x .45"	8 colors and 3 rainbow effects	17 lbs.	150 ft	81 different messages can be stored & displayed 28,500 characters	32-120°F 0-95% relative humidity non-condensing	84.4" L 3.8" D 5.5" H/ 3.1" H 81" L
MC1-14C4	120V AC ± 10% 100 watt max.	27 in condensed rotate mode, 14 in all other modes	4.0" Array 80 x 7 pixels	.35" x .57"	8 colors and 3 rainbow effects	13.25 lbs.	200 ft	81 different messages can be stored & displayed 30,000 characters	32-120°F 0-95% relative humidity non-condensing	49" L 4.25" D 6.25" H/ 4" H 45.6" L

\* Fonts available Block (sans serif), decorative (serif), upper /lower case, slim/wide and international character sets on all except MC1-15C2, MC1-15R2 and MC1-14C4