

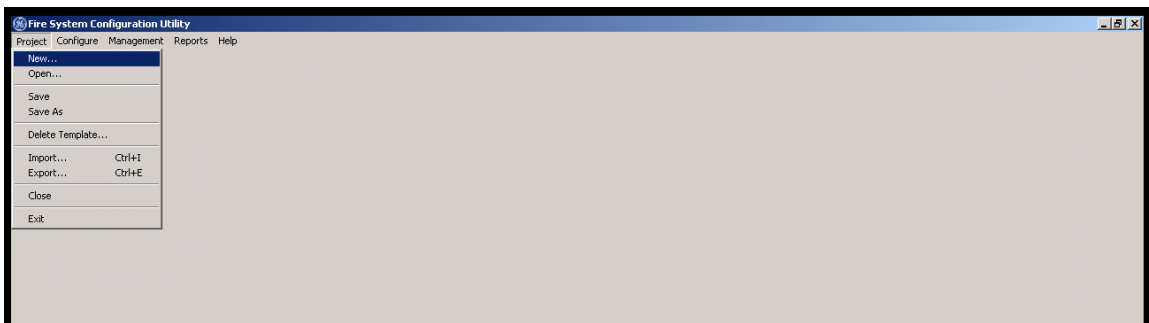
AEBN: 112108-2

Date: 11/21/08

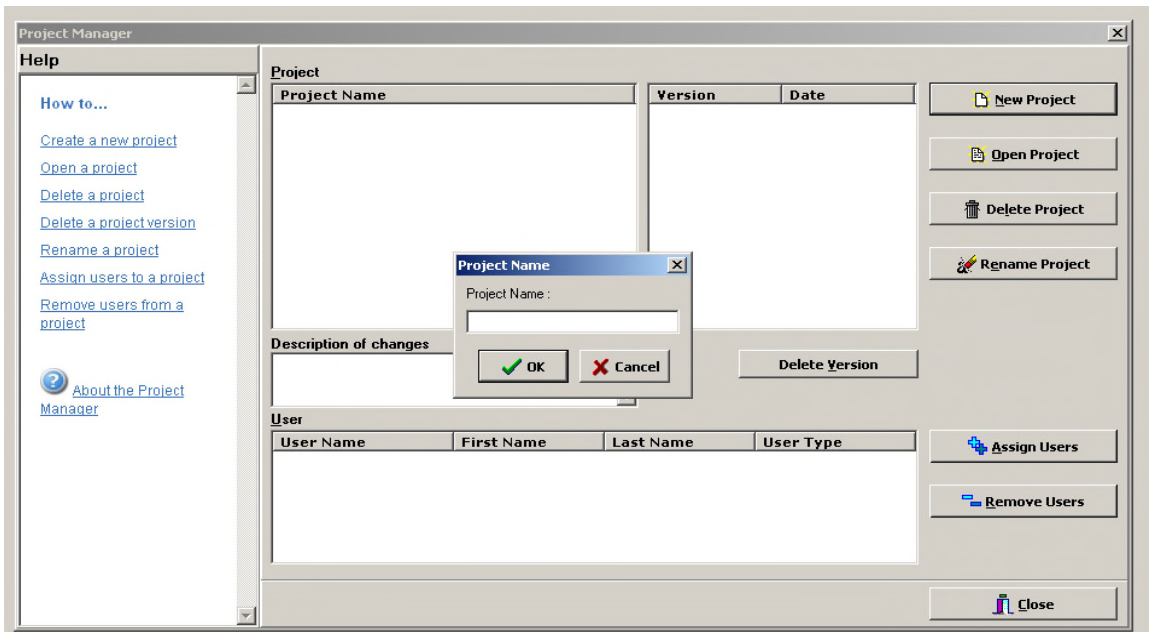
Subject: FSA-CU Program, Getting Started

The FSA-CU configuration utility can be used to program any of the Edwards FS series fire alarm panels (E-FS FireShield, E-FSC, & E-FSA). The following will describe the basics for getting started.

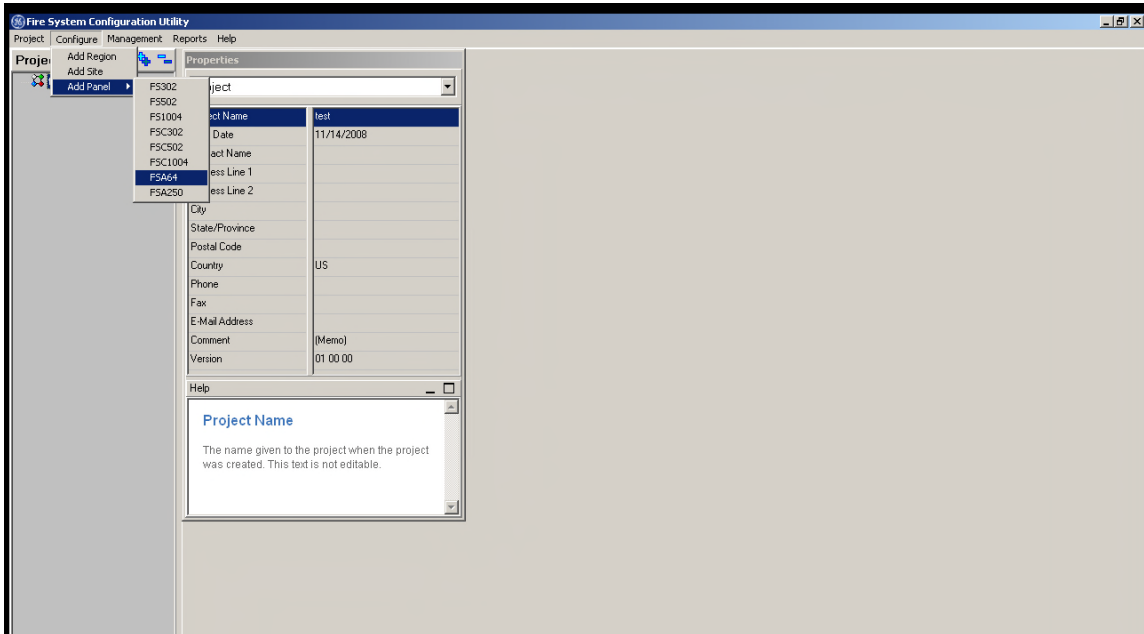
After opening the program, to begin a new project select **Project – New** in the upper left.



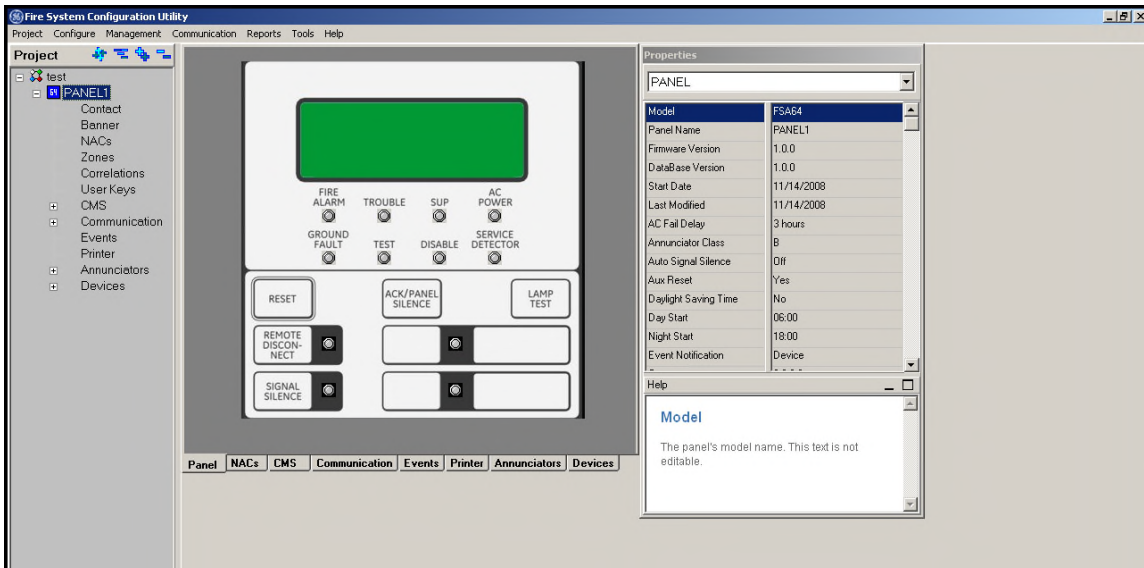
A Project Manager screen will appear. Select **New Project** on the right, enter a project name in the pop up box and click on **OK**. While the project you just created is still highlighted, select **Open Project**.



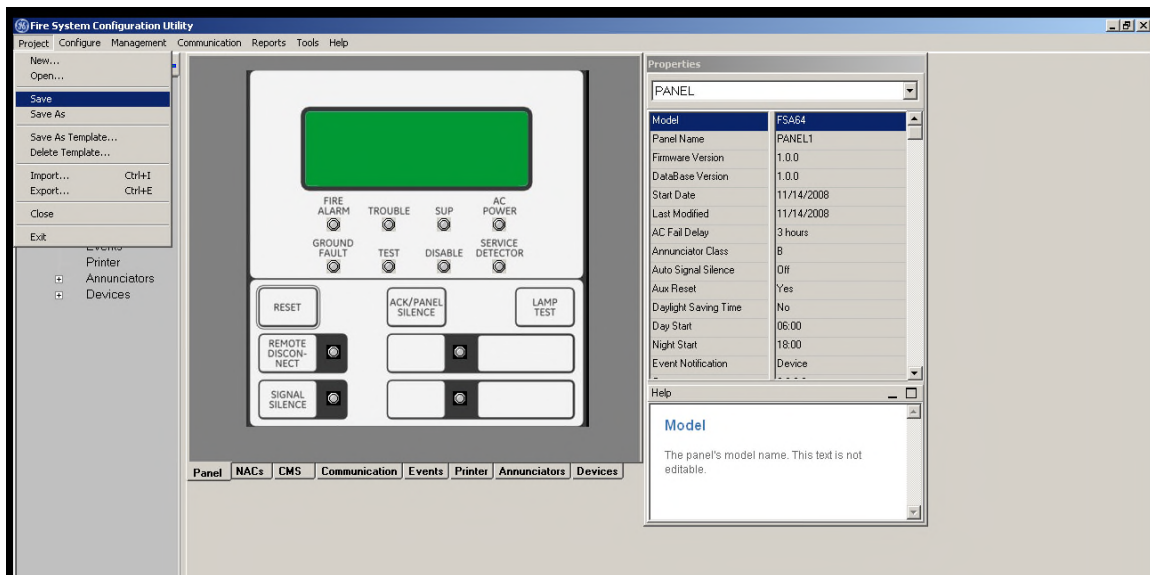
Next, select **Configure** on the main menu in the upper left then **Add Panel**, and select the panel type you are working on.



A configuration screen will then appear showing the options that are only available for the panel you chose.



Once you've created a new project, you can begin configuring the panel. Everything is menu driven. There is a Help box displaying information for the section you're in, plus you can also click on **Help** on the main menu at the top for more information. On the left in the Project box you can expand the menu by clicking on the plus (+) symbol to display additional choices. Clicking on the choices themselves opens up windows for making changes/selections. In some cases, under the panel display window there are also option tabs to choose from.



Periodically while configuring your system, it's a good idea to save the project. On the main menu at the top, select **Project**. You can then either select **Save** if you want to keep the same project name and revision number, or **Save As** if you want to save the project as a different revision or change the name all together. If you were to close the project without doing a save first, the project will still automatically be saved with the last changes you made using the same name and revision number. It is still better, however, to get into the habit of manually saving your project.