



FSA-CU V3.5 and FSA Panel Firmware V2.3 Release Notes

Content

Introduction	2
Overview	2
Operating system compatibility	2
Software revisions and compatibility	2
Future software versions and compatibility	3
New in FSA-CU 3.5 and Firmware 2.3	3
Installation and upgrade notes	4
FSA-CU Help	4
Known issues	4
Reminder of NFPA 72 testing requirements	5
Reminder of NFPA 720	5
Contact information	5

Contacting support

Contact Technical Support if you encounter any difficulties during this installation. Please make sure you have the requested diagnostic or log files ready before you contact us.

Tel +1 800 336 4206

Fax +1 860 284 3083

signaling.techsupport@fs.utc.com

edwards-signals.com

Introduction

These release notes contain a summary of the changes made for FSA-CU version 3.5 and FSA panel firmware version 2.3.

Overview

FSA-CU 3.5 includes the following new features:

- Fixed the activation count issue, where deleting a device from the CU device configuration doesn't update the activation count of the corresponding correlation groups.

Firmware 2.3 includes the following new features:

- Added ability to auto reboot the panel when the firmware is updated using the Firmware Update Utility (FUU).
- Fixed the activation count issue, where deleting a device from the Panel UI device list doesn't update the activation count of the corresponding correlation groups.

Operating system compatibility

FSA-CU 3.5 has been tested and is compatible with the following Microsoft Windows operating systems:

- Windows XP (32-bit)
- Windows Vista (32-bit)
- Windows 7 (32-bit)

This version has not been tested with 64-bit operating systems. Refer to "Known issues" on page 4 for an important note concerning Windows operating systems.

Software revisions and compatibility

FSA-CU database compatibility

FSA-CU V3.5 is used to generate databases for panels that use the following versions of firmware:

Table 1: Panel firmware supported by FSA-CU V3.5

Version	Feature description
1.2	Initial release
2.0	199 Correlations, In Suite Auto Signal Silence, Latching, Relay\Sounder Base groups
2.1	IP account expansion

Version	Feature description
2.2	Firmware update
2.3	Panel auto reboot/activation count fixes

To determine the firmware version on your panel, do the following:

1. Press the menu button and choose Reports.
2. Choose System Configuration.
3. Choose All.

“Version” is the first item listed after the time and date. It will be listed in an XX.YY.ZZ format and Version 02.30.00 is equivalent to Version 2.3.

Firmware 2.3 compatibility

Firmware 2.3 is not compatible with FSA-CU 3.0, 3.1, 3.2, 3.31, 3.32, 3.4. If you have a panel with version 2.3 firmware, FSA-CU 3.5 is required.

Future software versions and compatibility

Older firmware versions may not be supported in the next CU release.

New in FSA-CU 3.5 and Firmware 2.3

Ability to auto reboot the panel when the firmware is updated using the FUU tool

Firmware version 2.3 automatically reboots the panel after firmware update from the FUU tool is successfully completed.

Manual reboot is still required if you are updating firmware version 2.2 to version 2.3 using the FUU tool.

Activation count issue

On previous FSA-CU and firmware versions, when a device was deleted from the Device configuration form or loop, the maximum activation count was not reduced according to the number of maximum inputs in correlation group in which the deleted device was part of.

This issue is now fixed in FSA-CU 3.5 and Firmware 2.3. When a device is deleted from the Device configuration form or loop, the maximum activation count will be reduced according the maximum inputs of the correlation group.

Installation and upgrade notes

We recommend that you do not manually delete your previous version of the FSA-CU. Rather, let the installation program update that version to the current version.

The FSA-CU is best run on a computer with a resolution of 1024 x 768 (or better) and small fonts. If any other settings are used, some of the FSA-CU dialog boxes will be resized and may not display properly.

FSA-CU Help

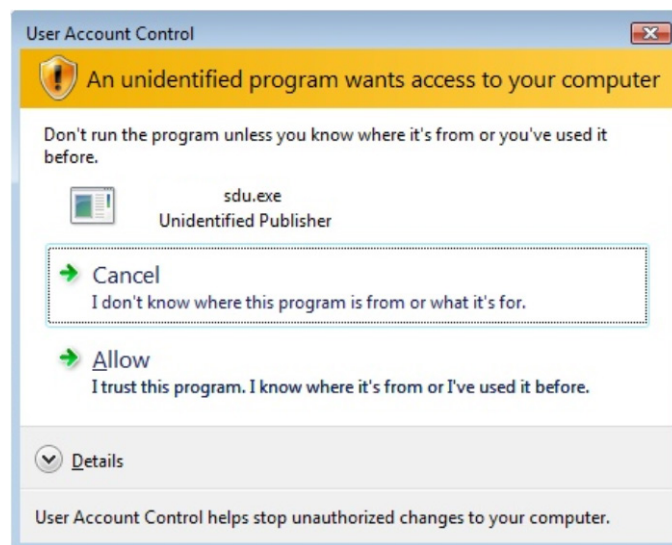
FSA-CU Help requires that you have Internet Explorer 6.0 or later installed. The HTML help file is not compatible with other web browsers.

Known issues

Running the FSA-CU on the Microsoft Vista and Windows 7 operating systems

Some features in the FSA-CU require the program to be run with higher privileges in the Vista and Windows 7 execution level scheme. However, running at the higher privilege level results in the following screen being displayed.

Figure 1: Windows User Account Control dialog box (typical)



This is displayed because the FSA-CU is not currently certified with electronic signature verification software. This issue will be remedied in a future release. In the meantime, select the Allow option and your FSA-CU will run with full functionality.

Installing over FSA-CU 3.0, 3.1, 3.2, 3.31, 3.32, or 3.4

This installation will upgrade any previous installation of the FSA-CU. The upgrade will not delete your projects. If you have a previous installation of the FSA-CU, install FSA-CU 3.5 into the same folder as the previous installation or you will not be able to see your existing projects.

Reminder of NFPA 72 testing requirements

When changes are made to site-specific software, the following shall apply:

- All functions known to be affected by the change, or identified by a means that indicates changes, shall be 100 percent tested.
- In addition, 10 percent of initiating devices that are not directly affected by the change, up to a maximum of 50 devices, also shall be tested and correct system operation shall be verified.
- A revised record of completion in accordance with NFPA standards shall be prepared to reflect these changes.

Changes to all control units connected or controlled by the system executive software shall require a 10 percent functional test of the system, including a test of at least one device on each input and output circuit to verify critical system functions such as notification appliances, control functions, and off-premises reporting.

Reminder of NFPA 720

Installation, location, performance, inspection, testing, and maintenance of carbon monoxide detection and warning equipment shall be in accordance with the requirements in NFPA 720 *Standard for the Installation of Carbon Monoxide (CO) Detection and Warning Equipment – 2012*.

Contact information

For contact information, see <http://edwardssignaling.com>

© 2013 UTC Fire & Security Americas Corporation, Inc. All rights reserved.