

TECHBN: 091410

Date: September 14, 2010

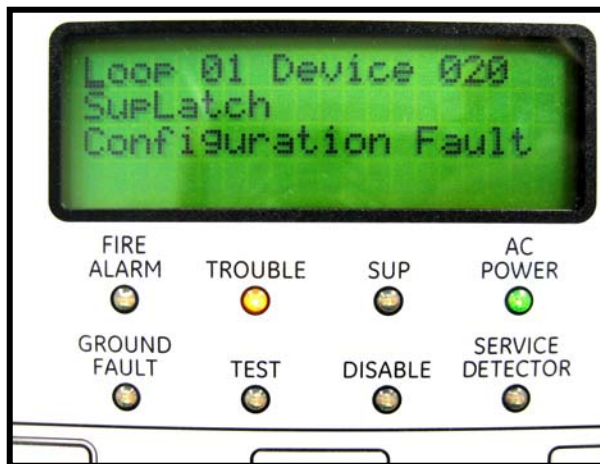
Subject: E-FSA Smoke Detector Supervisory Device Type – Configuration Fault

Background:

One of the new features included with version 3.2 of the FSA-CU configuration utility program and version 2.0 of the panel firmware is the ability to configure the E-PD and E-PHD smoke detectors as supervisory device types instead of smoke (alarm). In some applications, such as hotel rooms, you may not want the detectors to alarm the panel, but rather just give a supervisory indication that the device has activated.

Problem:

If you configure a smoke detector as a supervisory device type (latching or non-latching) using the FSA-CU, then download the program to the panel, the panel will show a Configuration Fault for that detector.



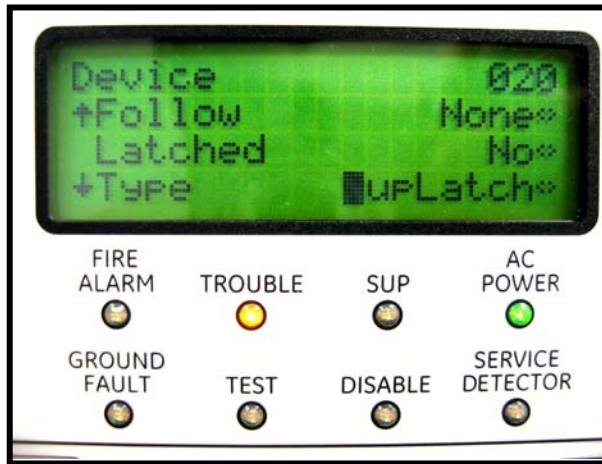
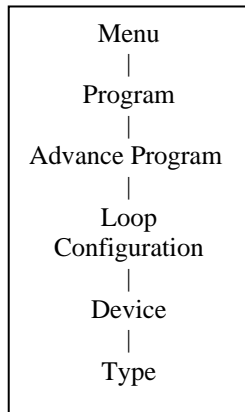
First screen on panel's LCD will indicate which device is in trouble. Pressing the Enter button on keypad will display what the trouble is (shown here).

Solution:

If you have a Configuration Fault for a detector on the panel, you will have to reconfigure it as a smoke *at the panel* first, exit programming mode and let the trouble clear, then reenter programming and change the detector back to supervisory.

Edwards Signaling™ *Technical Bulletin*

To change a device type: Enter the menu, then go to Program > Advance Program (enter level 2 password if prompted) > Loop Configuration > Device (enter device address) > Type > change device type by using left or right arrow > press Enter > Save > enter address of next device and repeat changing device type, or if finished, press back arrow to Loop Configuration screen > scroll down to Save and press Enter > then press Menu to exit.



Device section in panel programming menu where you change the device type

Prevention:

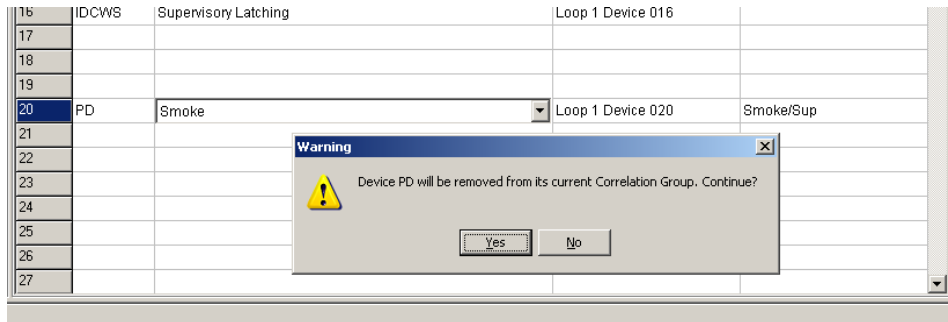
So you do not get a Configuration Fault in the first place, you must configure the smoke detector as a smoke (alarm) device type in the CU, then change to supervisory type *at the panel* after downloading.

Notes:

If you Autoprogram a system, by default all smoke detectors are configured as smoke (alarm). If you are using the FSA-CU to make changes (assign messages, make correlation changes, etc.), and you also want to configure smoke detectors as supervisory, *leave them as smoke (alarm) devices in the CU and change them to supervisory at the panel after you download.*

If you are working with a panel that has already been programmed with smoke detectors configured as supervisory, when you upload the panel data into the CU, those smoke detectors will show as supervisory type on the Device Configuration screen. You will have to change those detectors back to smoke (alarm) device type before you download to the panel.

Edwards Signaling™ *Technical Bulletin*



Device at address 20 was configured at panel as a supervisory. Changed here to smoke by clicking in the Device Type box.

When you do that, you will be warned that the device will be removed from all correlations and given the option to choose Yes or No. *Select No to save the existing correlations.* If you select Yes, the device will be removed from correlations and you'll have to manually add them back (if needed) in the Correlation section. After you download to the panel, then you can change the required smoke detectors back to supervisory using the panel's keypad.

Bottom line:

You cannot use version 3.2 of the FSA-CU configuration utility program to configure E-PD or E-PHD smoke detectors as supervisory device types. You can only configure smoke detectors as supervisory through front panel programming (with panel firmware version 2.0 or higher).